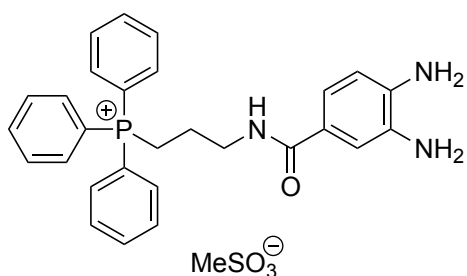


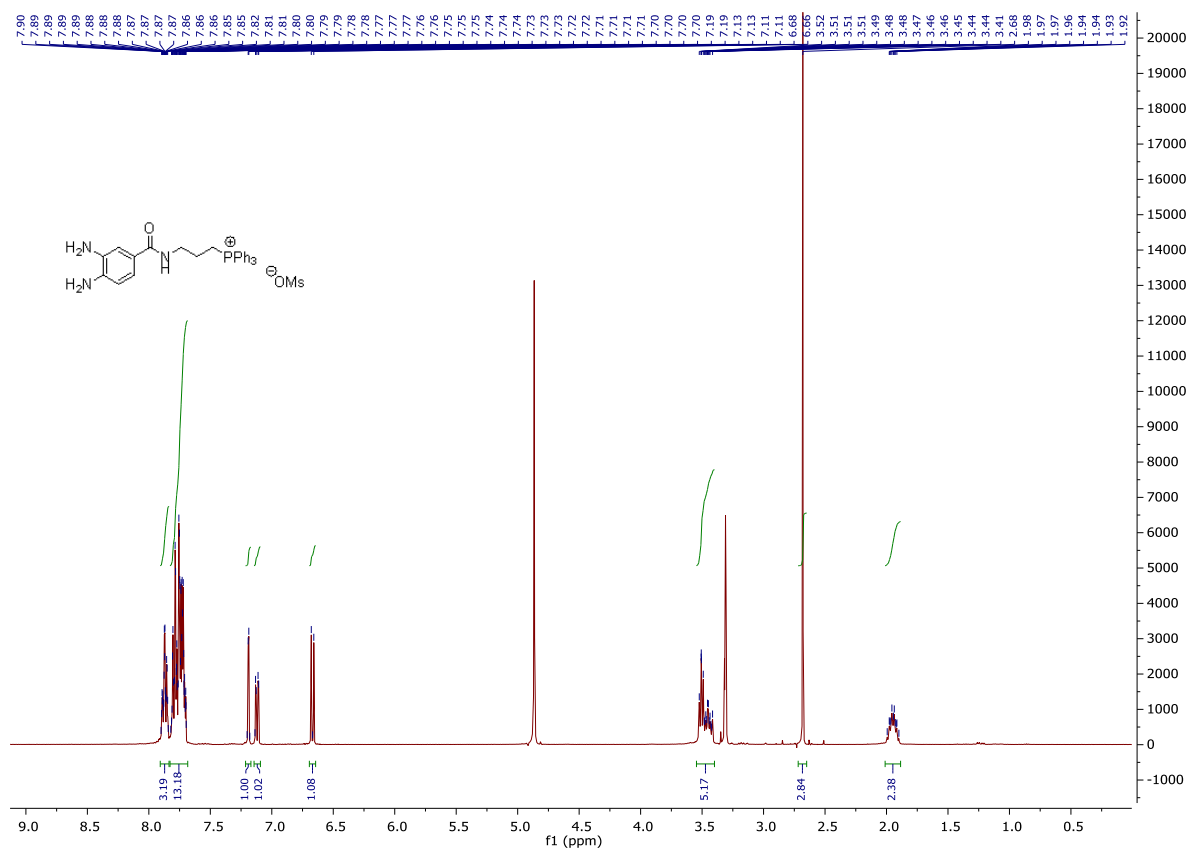
## The mitochondria-targeted methylglyoxal sequestering compound, **MitoGamide** is cardioprotective in the diabetic heart

Mitchel Tate<sup>1,2</sup>, Miles J. De Blasio<sup>1</sup>, Darnel Prakoso<sup>1</sup>, Minh Deo<sup>1</sup>, Gavin C. Higgins<sup>2</sup>, Runa Lindblom<sup>2</sup>, Helen Kiriazis<sup>3</sup>, Carlos D. Baeza-Garza<sup>4</sup>, Stuart T. Caldwell<sup>4</sup>, Richard C. Hartley<sup>4</sup>, Thomas Krieg<sup>5</sup>, Michael P. Murphy<sup>5, 6</sup>, Melinda T. Coughlan<sup>2</sup>, Rebecca H. Ritchie<sup>1,2\*</sup>

Structure of MitoG amide (methanesulfonate salt)



<sup>1</sup>H NMR spectrum (400 MHz, MeOD)



$^{13}\text{C}$  NMR spectrum (101 MHz, MeOD)

